

MODEL	F20 Option Tray	VOLT/Hz	DATE OF MODIFICATION	SERIAL NO.
MODIFIED ARTICLE	Parts Catalog			
REASON OF MODIFICATION	Parts Catalog Correction			

Please correct your parts catalog as follows:

1) Part Number Correction

Incorrect		Correct		Index No.	Page
	Description	P/N	Description		
03140100w	Philips Pan Head Screw - M4x10	03140120W	Philips Pan Head Screw - M4x12	110	5-7

2) Description Corrections

P/N	Incorrect Description	Correct Description	Index No.	Page
59387047	Drawer Feed Plate - 115V +	Drawer Feed Plate - LT/LDG	8	5-9
59387147	Drawer Feed Plate - 220/240V	Drawer Feed Plate - A4/A3	8	5-9
59387051	Decal - English - 115V	Decal - English - LT/LDG	12	5-9 1
59387151	Decal - English - 220/240V	Decal - English - A4/A3	12	5-9
59387051	Decal - English - 115V	Decal - English - LT/LDG	3	5:19-
59387151	Decal - English - 220/240V	Decal - English - A4/A3	3	5-19

3) Addition

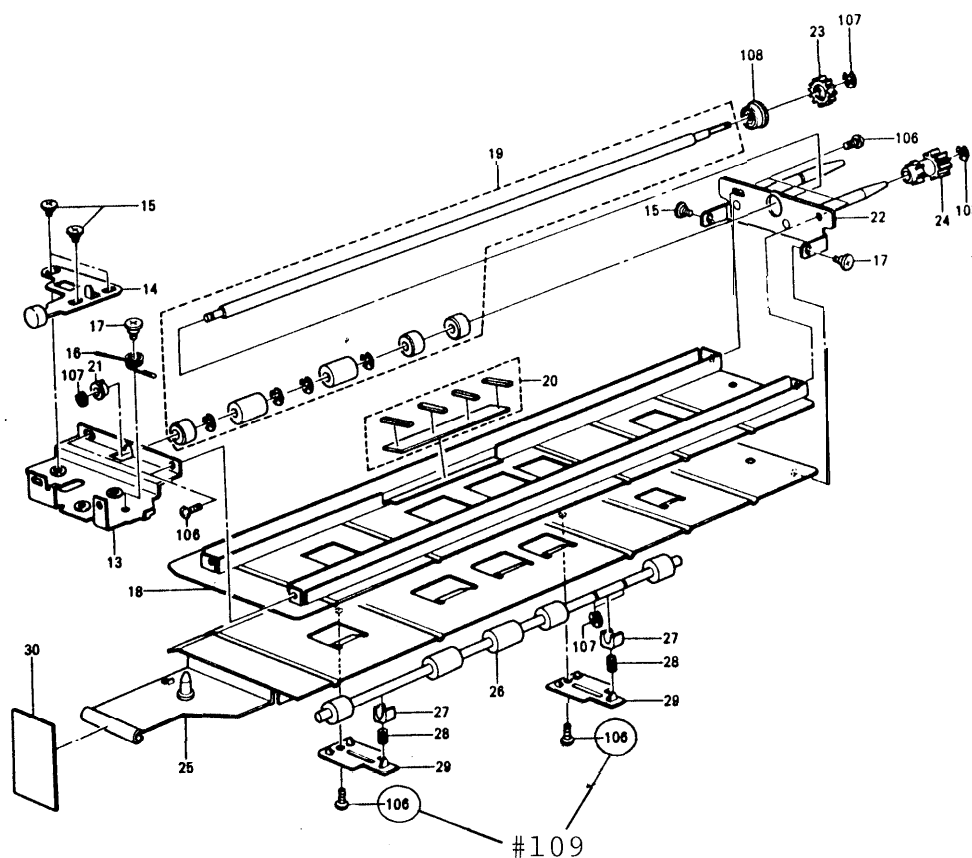
*:New Index no. (See Figure)

Description	Q'ty	Index No.	Page
09514006W Philips Screw With Flat Washer - M4x6	2	*109	5-5

DETAILS OF MODIFICATION

MANUAL PAGE

1. PAPER CONVEYOR UNIT (Page 5-4)



The philips screws #09514006W) were not listed on page 5-4, Please correct the index numbers accordingly

M. Konno, Manager
Technical Service Section

CONTROL NO.	BRAND	CODE	V / H Z	SERIAL NUMBER / MODEL CODE			
				F 2 0 Option Tray			
1	R I C O H	- 1 7	115/60				
	R I C O H	- 2 7	220/50				
MODEL NAME				R T 2 0			

M/BNO. : Master number of modification bulletin for this model.

CONTROL NO.: Reference number of modification bulletin for your model.

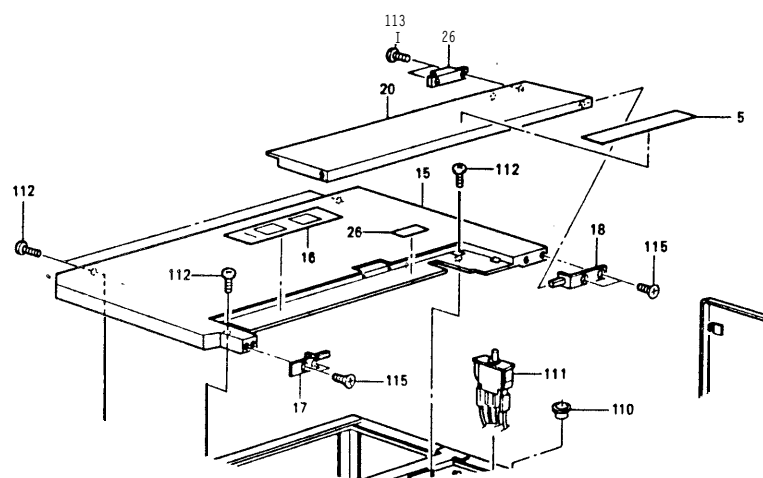
MODEL		F20 Option Tray					VOLT/Hz	DATE OF MODIFICATION	SERIAL NO.		
MODIFIED ARTICLE		Seal on Top Cover							/		
REASON OF MODIFICATION		To ensure Setting between the access cover and safety switch.									
DRAW. NO.	OLD PARTSNO.		NEW PARTS NO.	DESCRIPTION	A.B.C RANK	Q'TY USED OLD→NEW	INTER-CHANGE-ABILITY	PART NEEDED FOR REPLACEMENT BY NEW PART		PART CATALOG	
						PART NO.		DESCRIPTION	INDEX NO.	PAGE	
	59382952			Seal-0.05x24x40mm		1-0				26	5-11

- (1) ☒ **A** : To replace new parts immediately.
☒ **B** : To replace new parts at the time of repair.
☐ : To replace new parts at the time of overhaul.
- (2) When old and new parts are not mutually interchangeable, use additional parts or an assembly part indicated in" PARTS NEEDED FOR REPLACEMENT BY NEW PART" to install the new part.
- (3) ☐ Left mark indicates whether old part can be used in new machine or not.
☐ Right mark indicates whether new part can be used in old machine or not.

DETAILS OF MODIFICATION

MANUAL PAGE

4. EXTERIOR 2 (Page 5-10)



Since the superfluity between the access cover and safety switch is insufficient, the safety switch is sometimes turned off by vibration. SO, the misfeed indicator is displayed on the operation panel and monitor PCB.

To ensure setting between the above two parts, the seal(#59382952) between the top cover and magnet of the access cover has been deleted.

Manager
Overseas Service Department

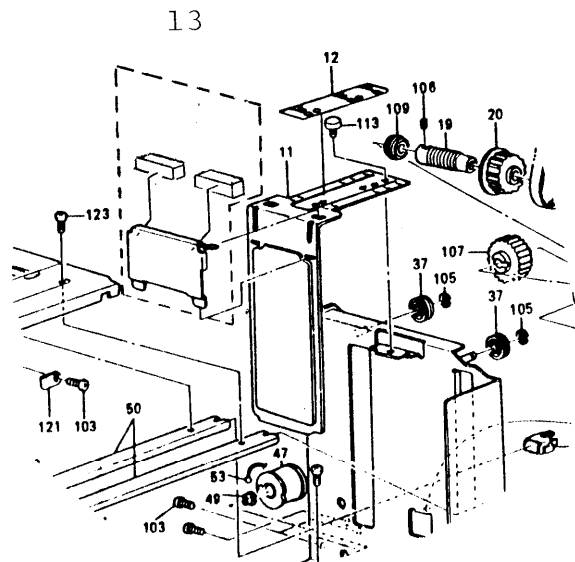
CONTROL NO.	BRAND	CODE	V / HZ	SERIAL NUMBER / MODEL CODE			
				F20 Option Tray			
2	R I C O H	- 1 7	115/60	1761100850			.
	R I C O H	- 2 7	220/50	1761101140			
MODEL NAME				R T 2 O			

M/B NO. : Master number of modification bulletin for this model.

CONTROL NO. : Reference number of modification bulletin for your model.

DETAILS OF MODIFICATION

3. EXTERIOR 1 (Page 5-8)



To increase safety, the guard rubber has been added in the plate spring of the side fence. The number of the plate spring has been changed to the number including the guard rubbers.

Guard Rubber

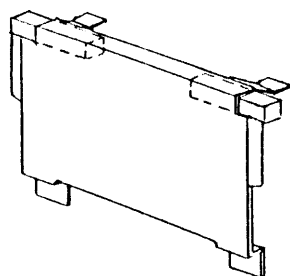
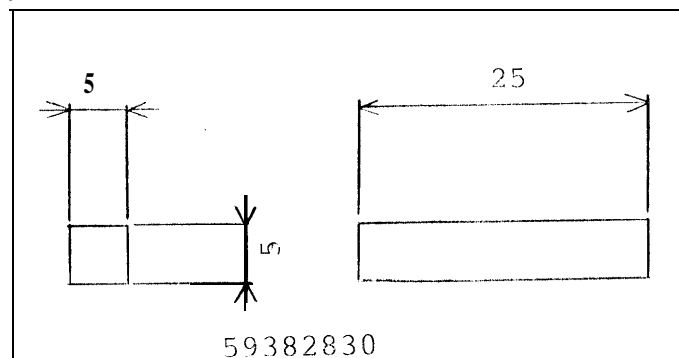


Plate Spring



M. Konno

M. Konno Manager
Overseas Service Department

CONTROL NO.	BRAND	CODE	V / H Z	SERIAL NUMBER / MODEL CODE			
				F20 option Tray			
3	R I C O H	- 1 7	115/60	1761201210			
	R I C O H	- 2 7	220/50	1761201460			
MODEL NAME				R T 2 0			

M/B NO. : Master number of modification bulletin for this model.

CONTROL NO. : Reference number of modification bulletin for your model.

MODEL	F20 Option Tray	VOLT/Hz	DATE OF MODIFICATION	SERIAL NO.
MODIFIED ARTICLE	Option Tray Harness			
REASON OF MODIFICATION	To meet safety standard (CSA, UL)			

DRAW. NO.	OLD PARTS NO.		NEW PARTS NO.	DESCRIPTION	A.B.C RANK	Q'TY USED OLD→NEW	INTER-CHANGE-ABILITY	PART NEEDED FOR REPLACEMENT BY NEW PART		PART CATALOG	
								PART NO.	DESCRIPTION	INDEX NO.	PAGE
	59385006	—		Option Tray Harness		1 - 0	/			10	6-11
										1	6-13
										1	6-15
		—	59385016	Option Tray Harness		0 - 1	o / o	→ European Version & etc.		10	6-11
							x / o	→ 115V versions		1	6-13
										1	6-15

(1) ☐ A : To replace new parts immediately.

☐ B : To replace new parts at the time of repair.

☐ C : To replace new parts at the time of overhaul.

(2) When old and new parts are not mutually interchangeable, use additional parts or an assembly part indicated in "PARTS NEEDED FOR REPLACEMENT BY NEW PART" to install the new part.

(3) ☐ Left mark indicates whether old part can be used in new machine or not.
Right mark indicates whether new part can be used in old machine or not.

DETAILS OF MODIFICATION**MANUAL PAGE**

To meet the safety standard, the manufacturer of the option tray
harness has been changed. Therefore, the part number of the
option tray harness has been changed from #59385006 to #59385016.



M. KONNO , Manager
Overseas Service Department

CONTROL NO.	BRAND	CODE	V/HZ	SERIAL NUMBER / MODEL CODE			
				F20 Option Tray			
4	R I C O H	- 1 7	115/60		←1770703212		
	R I C O H	- 2 7	220/50				
MODEL NAME				R T 2 0			

M/BNO. : Master number of modification bulletin for this model.

CONTROL NO.: Reference number of modification bulletin for your model.

MODEL	F20 Option Tray	VOLT/Hz	DATE OF MODIFICATION	SERIAL NO.
MODIFIED ARTICLE	Parts Catalog			
REASON OF MODIFICATION	Parts Catalog Correction			

Please correct the following parts in your parts catalog:

Page	Index No.	Incorrect P/N	Correct P/N	Description	Q'ty
5-9	50	#59382787	#59382783	Tray Support Bracket	2



CONTROL NO.	BRAND	CODE	V/HZ	SERIAL NUMBER / MODEL CODE			
				F20	Option	Tray	
5	RICOH	- 1 7	115/60				
	RICOH	- 2 7	220/50				
MODEL NAME				RT 2 0			

M/BNO. : Master number of modification bulletin for this model.

CONTROL NO.: Reference number of modification bulletin for your model.

MODEL		F20 Option Tray						VOLT/Hz		DATE OF MODIFICATION		SERIAL NO	
MODIFIED ARTICLE		Paper Conveyor Unit											
REASON OF MODIFICATION		To improve paper transportability											
DRAW. NO.	OLD		NEW PARTSNO.	DESCRIPTION	A.B.C RANK	Q'TY USED OLD→NEW	INTER-CHANGE-ABILITY	PART NEEDED FOR REPLACEMENT BYNEWPART		PART CATALOG			
	PARTSNO.							PART NO.	DESCRIPTION	INDEX NO.	PAGE		
	59382570		59382563	Upper Transport Roller		1 - 1				19	5-5		
	52192984		59382599	Pressure Plate - Transport Roller		2 - 2				29	5-5		
			03140060W	Phillps Pan Head Screw - M4 x 6		n - n+2				106	5-5		

(1) ☐ : To replace new parts immediately.

☐ : To replace new parts at the time of repair.

☐ : To replace new parts at the time of overhaul.

(2) When old and new parts are not mutually interchangeable, use additional parts or an assembly part indicated in "PARTS NEEDED FOR REPLACEMENT BY NEW PART" to install the new part.

(3) Left mark indicates whether old part can be used in new machine or not.
Right mark indicates whether new part can be used in old machine or not.

(4) Please file this BULLETIN between pages _____ and _____ of your service manual.

DETAILS OF MODIFICATION

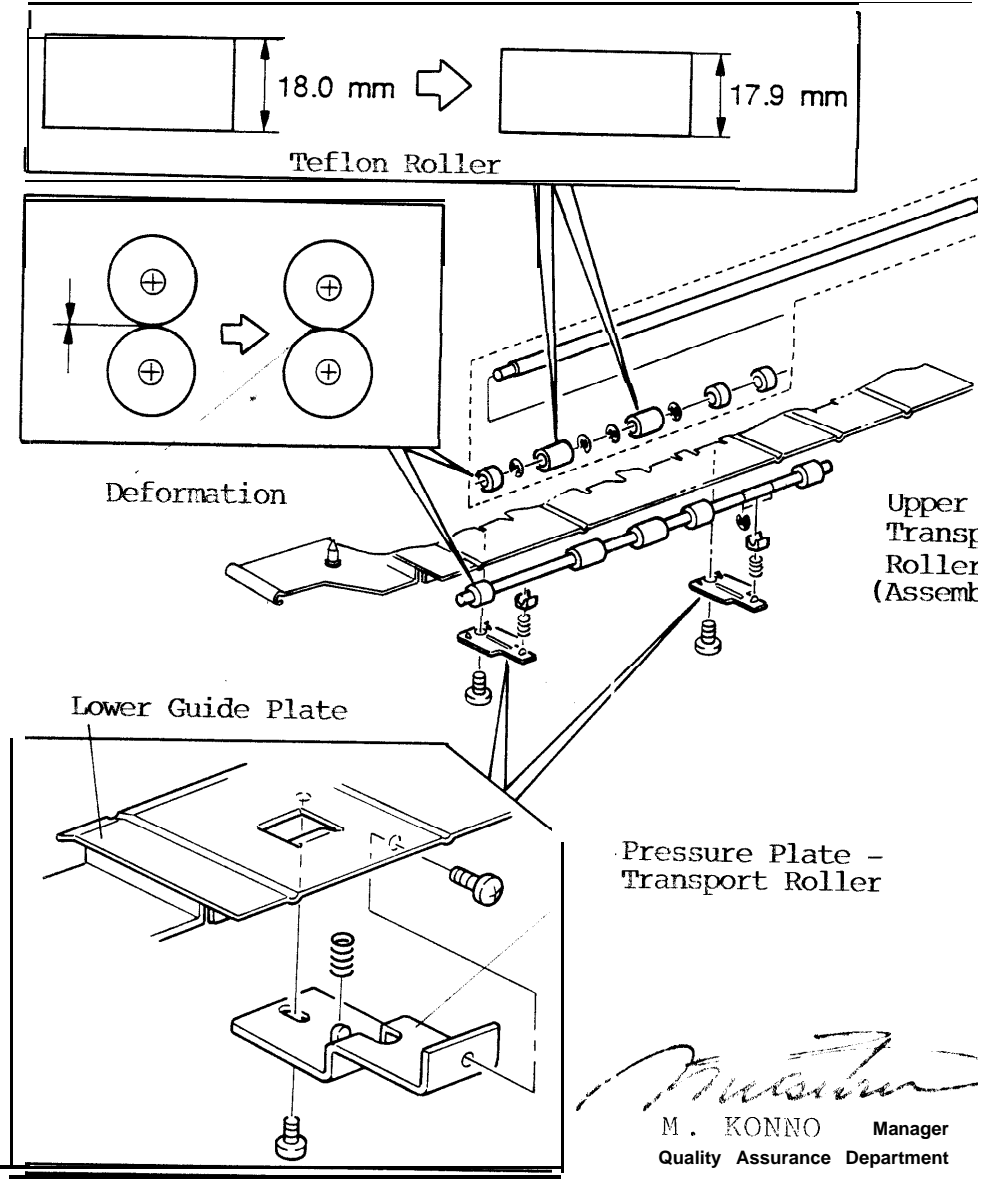
To improve transportability of the transport rollers in the F20 option tray, the following modifications have been applied to the production line.

1. **Pressure Plate - Transport Roller**
These plates apply pressure between the upper and lower transport rollers. To maintain sufficient pressure, the securing screws of each plate have been increased from one to two.
2. **Lower Guide Plate**
Although the part number has not been changed, two screw holes have been provided to install the above additional screws..
3. **Upper Transport Roller (Assembly)**
This roller assembly consists of two teflon rollers and three rubber rollers. The diameter of each teflon roller has been decreased from 18.0 mm to 17.9 mm increasing the deformation of the rubber rollers. This accordingly further improves the paper transportability of the transport rollers.

NOTE: A slight deformation in rubber feeding rollers increases the contact area resulting in more efficient paper transportability.

1. PAPER CONVEYOR UNIT (Page 5-4)

MANUAL PAGE



M. KONNO Manager
Quality Assurance Department

CONTROL NO.	BRAND	CODE	V / H Z	S E R I A L N U M B E R / M O D E L C O D E			
				F20 option Tray			
6	R I C O H	- 1 7	115/60	1780405662			
	R I C O H	- 2 7	220/50	1780405637			
M O D E L N A M E				R T 2 0			

M/BNO. : Master number of modification bulletin for this model.

CONTROL NO.: Reference number of modification bulletin for your model.

MODEL	F20 Option Tray	VOLT/Hz	DATE OF MODIFICATION	SERIAL
MODIFIED ARTICLE	Paper Conveyer Unit			
REASON OF MODIFICATION	As per field request			

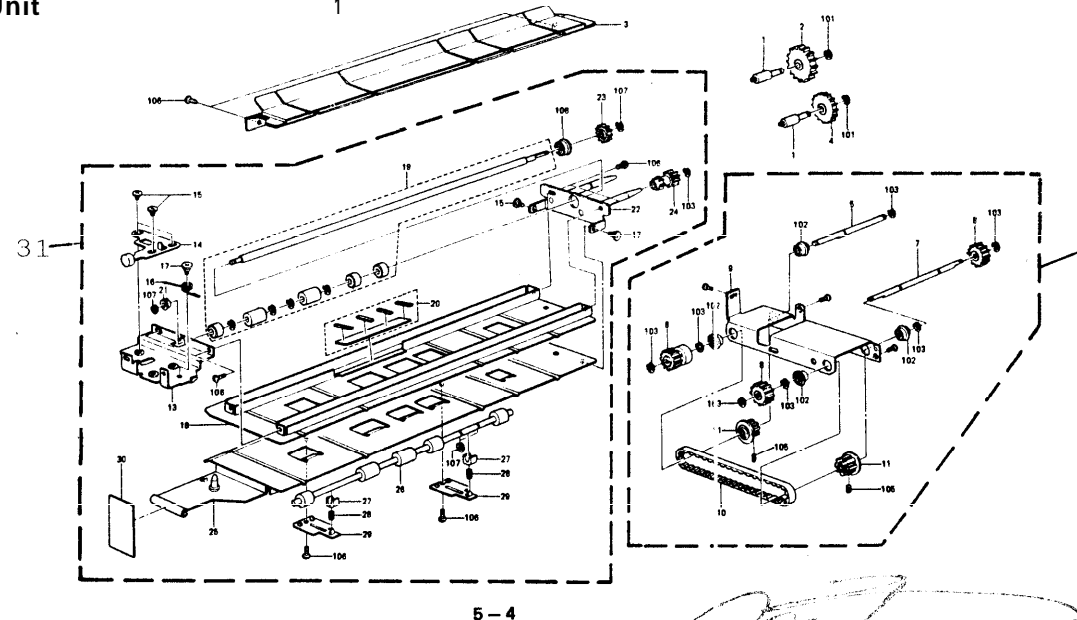
As per field request, the following units have been registered as service parts.

Please add the following parts to your parts catalog:

Page	Index No.	Part Number	Description	Q'ty
5-5	31 (New Index)	#59382550	Paper Conveyer Unit	1
5-5	32 (New Index)	#59382600	Paper Conveyer Drive Unit	1

Please circle the above units in your parts catalog as follows

1. PAPER CONVEYOR UNIT (Page 5-4)



CONTROL" NO.	BRAND	CODE	V / H Z	SERIAL NUMBER / MODEL CODE			
				F20 option Tray			
7	R I C O H	- 1 7	115/60				
	R I C O H	- 2 7	220/50				
MODEL NAME				R T 2 0			

M/BNO. : Master number of modification bulletin for this model.

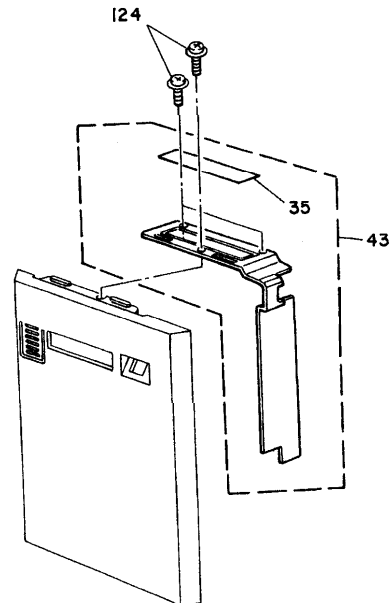
CONTROL NO. : Reference number of modification bulletin for your model.

MODEL	F20 Option Tray	VOLT/Hz	DATE OF MODIFICATION	SERIAL NO
MODIFIED ARTICLE	Parts Catalog			
REASON OF MODIFICATION	Parts Catalog Correction			

Please correct the following part and illustration in your parts catalog:

Page	Index No.	Incorrect P/N	Correct P/N	Description	Q'ty
5-9	43	#59382704		Upper Cover	
5-9	43		#59387010	Drawer Upper Cover	

3. EXTERIOR 1 (Page 5-8)



Please file this BULLETIN between pages and of your service manual.

M. Konno
M. Konno, Manager
Quality Assurance Department

CONTROL NO.	BRAND	CODE	V / HZ	SERIAL NUMBER / MODEL CODE			
				F20 Option Tray			
8	R I C O H	- 1 7	115/60				
	R I C O H	- 2 7	220/50				
MODEL NAME				R T 2 0			

M/B NO. : Master number of modification bulletin for this model.

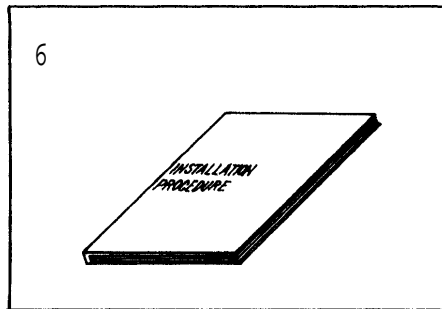
CONTROL NO. : Reference number of modification bulletin for your **model**.

MODEL	F20 Option Tray	VOLT/Hz	DATE OF MODIFICATION	SERIAL NO
MODIFIED ARTICLE	Parts Catalog			
REASON OF MODIFICATION	Parts Catalog Correction			

Please add the following part and illustration to your parts catalog:

Page	Index No.	Part Number	Description	Q'ty	
5-19	6 (New Index)	#59388721	Installation Procedure - English	1	(Ricoh version)
5-19	6 (New Index)	#59388722	Installation Procedure - Multi	1	(Ricoh version)
5-19	6 (New Index)	#59388723	Installation Procedure - English	1	(OEM version)

8. DECAL AND DOCUMENT (Page 5-18)



Please file this BULLETIN between pages and of your service manual.


M. Konno, Manager
Quality Assurance Department

CONTROL NO.	BRAND	CODE	v/Hz	SERIAL NUMBER / MODEL CODE			
				F20 Option Tray			
9	R I C O H	- 1 7	115/60				
	R I C O H	- 2 7	220/50				
MODEL NAME				R T 2 0			

M/B NO. : Master number of modification bulletin for this model.

CONTROL NO.: Reference number of modification bulletin for your **model**.

MODEL		F20 Option Tray						VOLT/Hz	DATE OF MODIFICATION	SERIAL NO.					
MODIFIED ARTICLE		Rear Cover etc.													
REASON OF MODIFICATION		To decrease vibration noise of the option tray													
DRAW. NO.	OLD PARTSNO.		NEW PARTS NO.	DESCRIPTION	A.B.C	Q'TY USED	INTER-CHANGE-ABILITY	PART NEEDED FOR REPLACEMENT BY NEW PART		PART CATALOG					
	RANK				OLD→NEW	PART NO.		DESCRIPTION	INDEX NO.	PAGE					
	59382714	—		Rear Cover - Option Tray - R,N		1 - 0		Ricoh, Nashua		14	5-11				
			59382711	Rear Cover - Large Capacity Tray (RIC, NSA)		0 - 1		version only		14	5-11				
	59387225	—		Rear Cover - Option Tray - PB		1 - 0		Pitney Bowes		14	5-11				
			59387224	Rear Cover - Large Capacity Tray (PB)		0 - 1		version only		14	5-11				
	59387425	—		Rear Cover - Option Tray - Savin		1 - 0		Savin version only		14	5-11				
			59387424	Rear Cover - Large Capacity Tray (SVN)		0 - 1				14	5-11				
	59387725	—		Rear Cover - Option Tray - KALLE		1 - 0		Hoechst version only		14	5-11				
			59387724	Rear Cover - Large Capacity Tray (KAL)		0 - 1				14	5-11				
			59382718	Stopper - Rear Cover		0 - 6			New Index →	27	5-11				
			59382784	Pad - Tray Support Bracket		0 - 6			New Index →	59	5-9				
			59382831	Sheet - Side Fence		0 - 2			New Index →	60	5-9				

(1) **A** : To replace new parts immediately.

B : To replace new parts at the time of repair,

C : To replace new parts at the time of overhaul.

(2) When old and new parts are not mutually interchangeable, use additional parts or an assembly part indicated in "PARTS NEEDED FOR REPLACEMENT BY NEW PART" to install the new part.

(3) Left mark indicates whether old part can be used in new machine or not.
 Right mark indicates whether new part can be used in old machine or not.

(4) Please file this BULLETIN between pages _____ and _____ of your service manual.

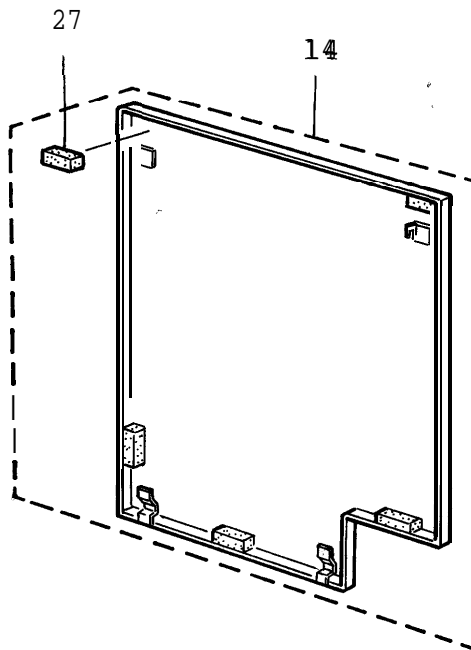
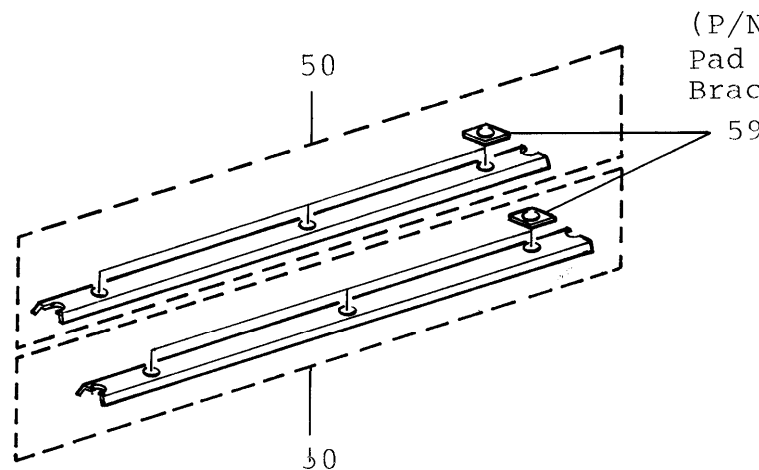
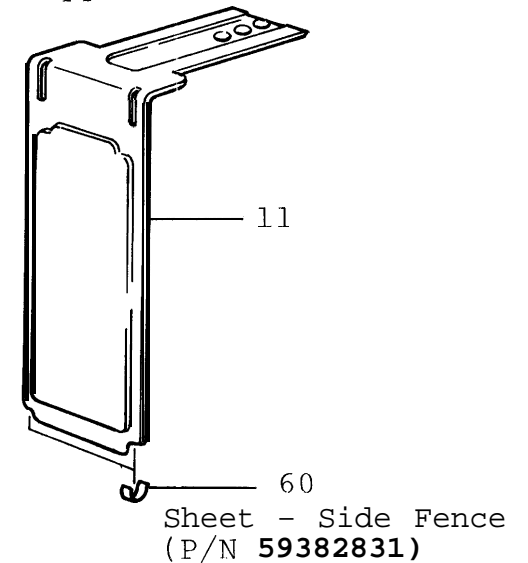
DETAILS OF MODIFICATIONMANUAL PAGE

To decrease vibration noise of the option tray when the drawer feed plate moves up or down, six rubber stoppers have been adhered onto the rear cover, three pads each have been adhered on two tray support brackets, and two mylar sheets have been adhered underneath the side fence bracket.

4.EXTERIOR 2 (Page 5-10)

(P/N 59382718)

Stopper - Rear Cover

3.EXTERIOR 1 (Page 5-8).(P/N 59382784)
Pad - Tray Support
BracketSheet - Side Fence
(P/N 59382831)

M. Konno, Manager

Quality Assurance Department

CONTROL NO.	BRAND	CODE	V / H Z	SERIAL NUMBER / MODEL CODE			
				F20 Option Tray			
10	R I C O H	- 1 7	115/60	1770703212			
	R I C O H	- 2 7	220/50	1770603120			
MODEL NAME				R T 2 0			

M/B NO. : Master number of modification bulletin for this model.

CONTROL NO.: Reference number of modification bulletin for your model.

MODEL		F20 Option Tray (P.B. , Savin, Nashua version only~						VOLT/Hz		DATE OF MODIFICATION		SERIAL NO.	
MODIFIED ARTICLE		Open Section Knob, Release Lever, etc.											
REASON OF MODIFICATION		As per color standardization with F21											
DRAW. NO.	OLD PARTS NO.		NEW PARTS NO.	DESCRIPTION	A.B.C RANK	Q'TY USED OLD→NEW	INTER-CHANGE-ABILITY	PART NEEDED FOR REPLACEMENT BY NEW PART		PART CATALOG			
								PART NO.	DESCRIPTION	INDEX NO.	PAGE		
	52196067		A0294677	Release Lever		1 - 0				14	5-5		
				Release Lever - Guide Plate		0 - 1	x / x			14	5-5		
	52196064		A0294982	Decal - Grip		1 - 0				30	5-5		
				Decal - Release Plate		0 - 1	x / x			30	5-5		
	59382891		A4632901	Open Section Knob		2 - 2	x / x			31	5-7		
	59387047			Drawer Feed Plate - 115V		1 - 0		P.B. , Savin version	8	5-9			
			A4637027	Drawer Feed Plate - L T		0 - 1	x / x			8	5-9		
	59387147			Drawer Feed Plate - 220/240V		1 - 0		Nashua version	8	5-9			
			A4637028	Drawer Feed Plate - A4		0 - 1	X / x			8	5-9		
	59387010			Drawer Upper Cover		1 - 1	x / x			43	5-9		
	59387011		A4637004	Decal - English		1 - 0				35	5-9		
				Decal - Loading Paper		0 - 1	x / x			35	5-9		

(1) **A** : To replace new parts immediately.

B : To replace new parts at the time of repair.

C : To replace new parts at the time of overhaul.

(2) When old and new parts are not mutually interchangeable, use additional parts or an assembly part indicated in "PARTS NEEDED FOR REPLACEMENT BY NEW PART" to install the new part.

(3) Left mark indicates whether old part can be used in new machine or not.
 Right mark indicates whether new part can be used in old machine or not.

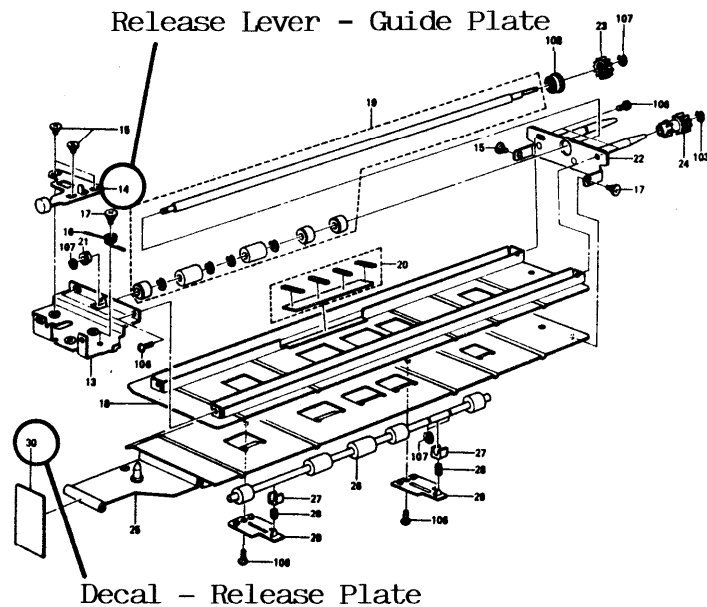
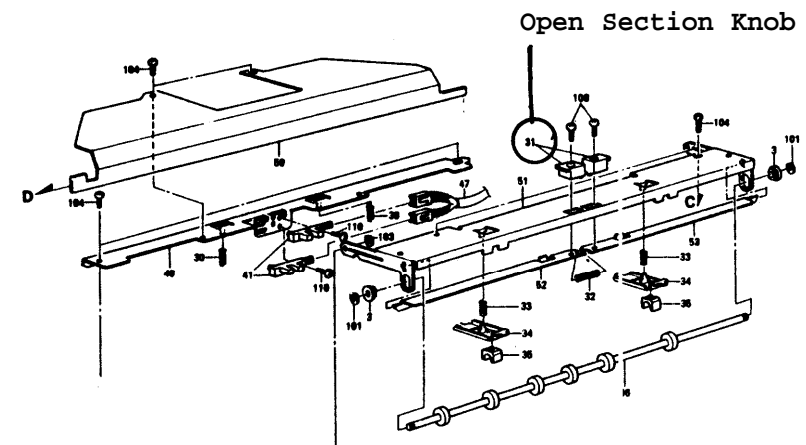
(4) Please file this BULLETIN between pages _____ and _____ of your service manual.

[illegible]

DETAILS OF MODIFICATIONMANUAL PAGE

In the Pitney Bowes, Savin, and Nashua version machines, the large capacity tray for the F20 will be commonly installed onto the F21. As per color standardization with the F21, the color of the modified parts described in page one and two of this bulletin has been changed.

The following are the locations of the part catalog:

1. PAPER CONVEYOR UNIT (Page 5-4)2. PAPER FEED UNIT (Page 5-6)

Manager

Quality Assurance Department

MODEL	F20 Option Tray	VOLT/Hz	DATE OF MODIFICATION	SERIAL NO.
MODIFIED ARTICLE	Installation Procedure (P.B., Savin, Nashua version only)			
REASON OF MODIFICATION	To facilitate servicing			

As the F21 machine production has started, the Installation Procedure for the LCT for the F21 unit has been added to the Installation Procedure of the F20.
The interchangeability is o/o.

Please correct your parts catalog as follows:

Page	Index	Old P/N	New P/N	Description
5-19	6	59388723	59388724	Installation Procedure - English

MODEL	F20 Option Tray	VOLT/Hz	DATE OF MODIFICATION	SERIAL N(1.
MODIFIED ARTICLE	Magnet Catch Ass'y			
REASON OF MODIFICATION	To increase reliability			

To increase reliability, the magnet catch ass'y has been changed to more durable type with the interchangeability code 0/0.

Please correct your parts catalogs as follows:






Page	Index No.	Old PIN	New PIN	Description	Q'ty
5-11	25	#50540440	#AG070004	Magnet Catch Ass'y	1

CONTROL NO.	BRAND	CODE	V/HZ	SERIAL NUMBER / MODEL CODE			
				F20 Option Tray			
11	RICOH	- 1 7	115/60				.
	RICOH	- 2 7	220/50				
MODEL NAME				RT 2 0			

M/B NO. : Master number of modification bulletin for this model.

CONTROL NO.: Reference number of modification bulletin for your model.

[illegible]

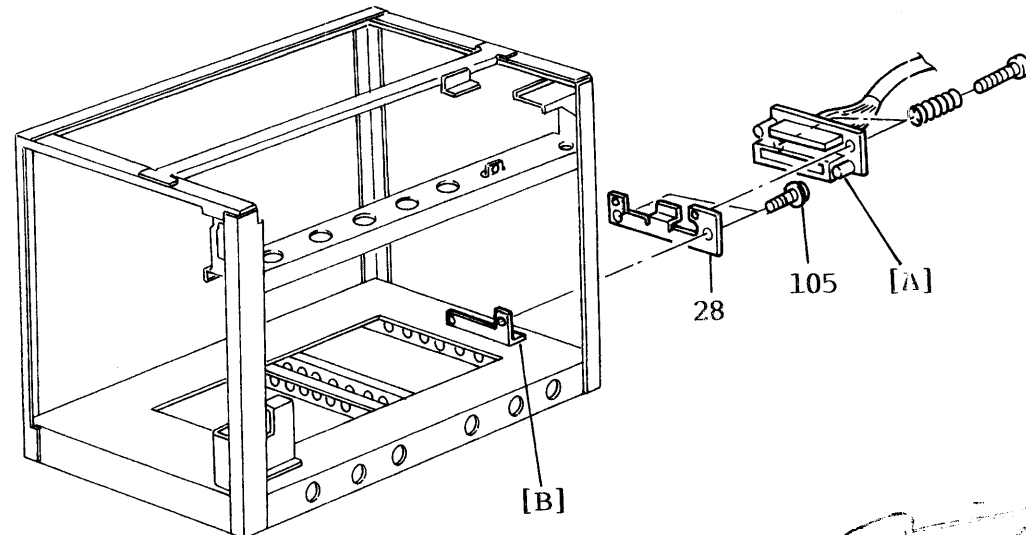
- (1)  : To replace new parts immediately.
 : To replace new parts at the time of repair.
 : To replace new parts at the time of overhaul.
- (2) When old and new parts are not mutually interchangeable, use additional parts or an assembly part indicated in “PARTS NEEDED FOR REPLACEMENT BY NEW PART” to install the new part.
- (3)  Left mark indicates whether old part can be used in new machine or not.
 Right mark indicates whether new part can be used in old machine or not.
- (4) Please file this BULLETIN between pages _____ and _____ of your service manual.

DETAILS OF MODIFICATIONMANUAL PAGE

The connector [A] of the option tray harness is sometimes broken by pulling out and pushing in the paper tray drawer repeatedly.

As a result, the paper tray drawer cannot be pushed in or the paper end indicator remains on. Therefore, the connector bracket has been added between the connector and the frame.

NOTE: The shape of the frame [B] has also been changed. However, the frame is not a service Part. Thus, the connector bracket cannot be installed onto the machines which have been produced before the serial number mentioned on Page 3 of 3.

4.EXTERIOR 2 (Page 5-10)

M. Konno
M. Konno, Manager
Quality Assurance Department

CONTROL NO.	BRAND	CODE	V / H Z	SERIAL NUMBER / MODEL CODE			
				F 20 Option Tray			
12	R I C O H	- 1 7	115/60	1790708151			
	R I C O H	- 2 7	220/50	179080XXXX			
MODEL NAME				R T 2 0			

M/B NO. : Master number of modification bulletin for this model.

CONTROL NO. : Reference number of modification bulletin for your model.


[illegible]

- (1) **A** : To replace new parts immediately.

B : To replace new parts at the time of repair.

C : To replace new parts at the time of overhaul.

- (2) When old and new parts are not mutually interchangeable, use additional parts or an assembly part indicated in "PARTS NEEDED FOR REPLACEMENT BY NEW PART" to install the new part.

- (3)  Left mark indicates whether old part can be used in new machine or not.
Right mark indicates whether new part can be used in old machine or not.

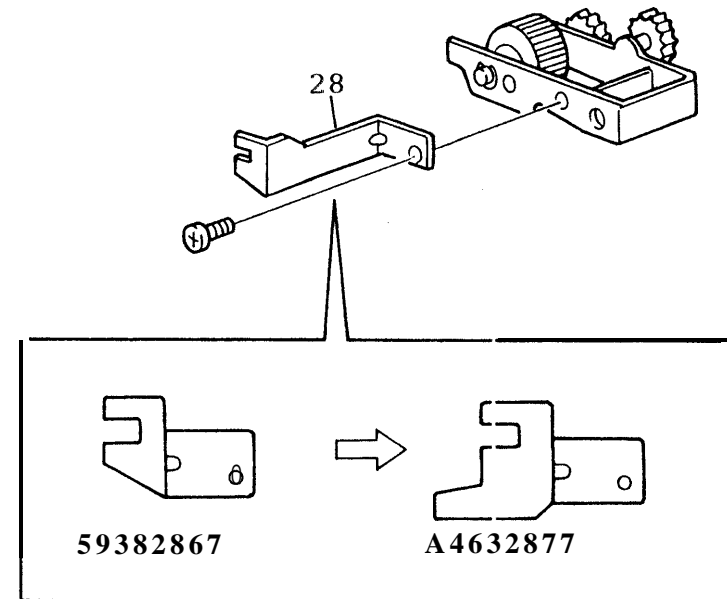
(4) Please file this RIII IFTIN between pages _____ and _____ of your service manual.

DETAILS OF MODIFICATIONMANUAL PAGE

When the paper is not loaded at the proper position on the large capacity tray, the tray overruns and then the drive wire may be cut. Therefore, the shape of the upper volume sensor actuator has been changed as shown in the illustration. As a result, the upper volume sensor has been able to detect the paper which is loaded within 22 mm [A] from the right side plate [B]. However, when the paper is loaded between 12 mm and 22 mm from the right side plate, paper misfeed occurs in the paper feed section.

Due to the change of the upper volume sensor actuator, a part [C] of the upper guide has been cut off to prevent the actuator from coming into contact with the upper guide.

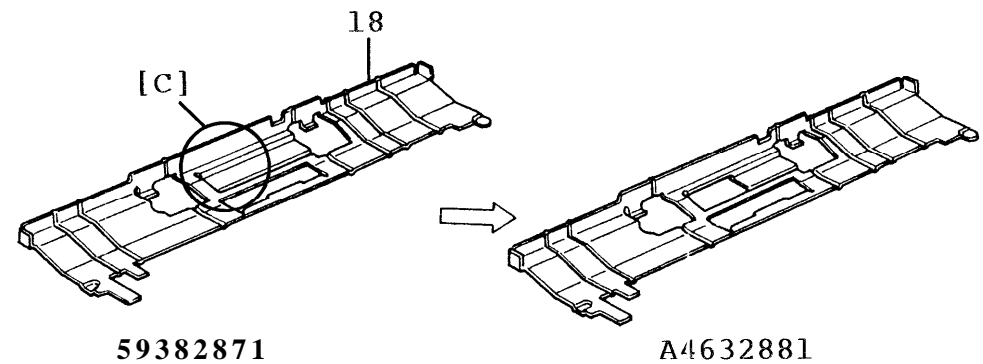
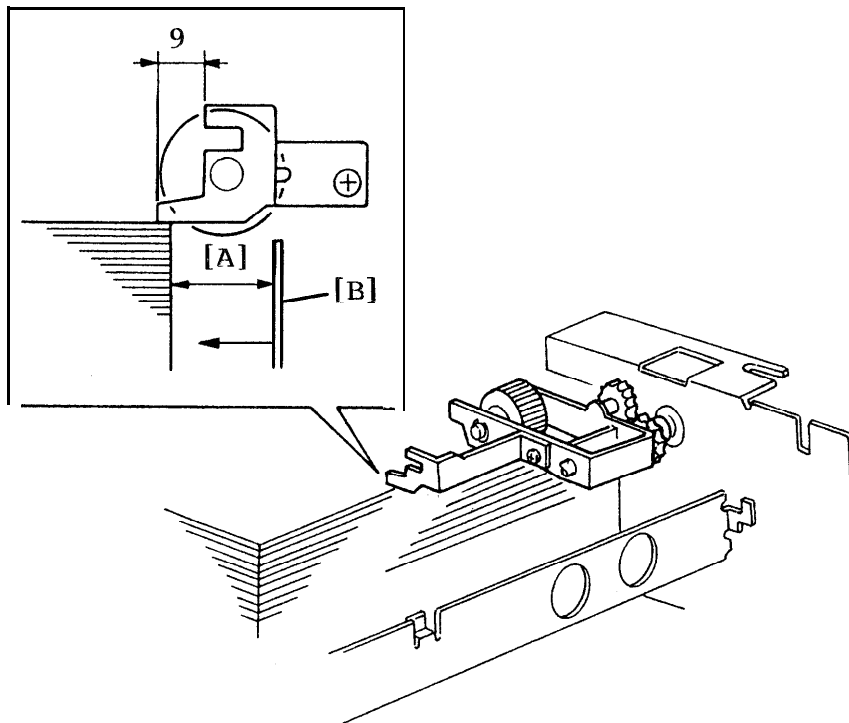
NOTE: When the upper sensor actuator is replaced with the new one, please replace the upper guide at the same time.

2. PAPER FEED UNIT (Page_ 5-6)

DETAILS OF MODIFICATION

MANUAL PAGE

2. PAPER FEED UNIT (Page 5-6)



M. Konno
M. Konno, Manager
Quality Assurance Department

CONTROL NO.	BRAND	CODE	V / H Z	SERIAL NUMBER / MODEL CODE			
				F 2 0 Option Tray			
13	R I C O H	- 1 7	115/60	17911 0XXXX			.
	R I C O H	- 2 7	220/50	17911 0XXXX			
MODEL NAME				R T 2 0			

M/B NO. : Master number of modification bulletin for this model.

CONTROL NO. : Reference number of modification bulletin for your model.

Model		Large Capacity Tray for F20/F21/F22 (NRG ONLY)						Volt/Hz	Date of Modification	Serial Number	
Modified Article		Front Cover etc.									
Reason for Modification		Due to a design change in the LCT, the following parts have been changed.									
Draw No.	Old Parts No.		New Parts No.	Description	A.B.C.	Q'ty Used Old → New	Inter- =:;.#"-	Part needed for replacement by new part		Parts Catalog	
					Rank			Part No.	Description	Index No.	Page
	59382713		A4637217	Front Cover - Large Capacity Tray (NRG)		1 → 1	x/x			1	9
	59387022			Shutter (NRG)		1 → 0				2	9
	54462724			Spring - Shutter		1 → 0			X/O as a set	3	9
	54462723			Shutter Shaft		1 → 0				4	9
	52195500		A0585300	Tray Button Switch		1 → 1	x/x			5	9
	07200030E			Retaining Ring - M3		2 → 0				101	9

Rank: A : Replace with new parts immediately.
interchangeability:

B : Replace with new parts at time of repair.

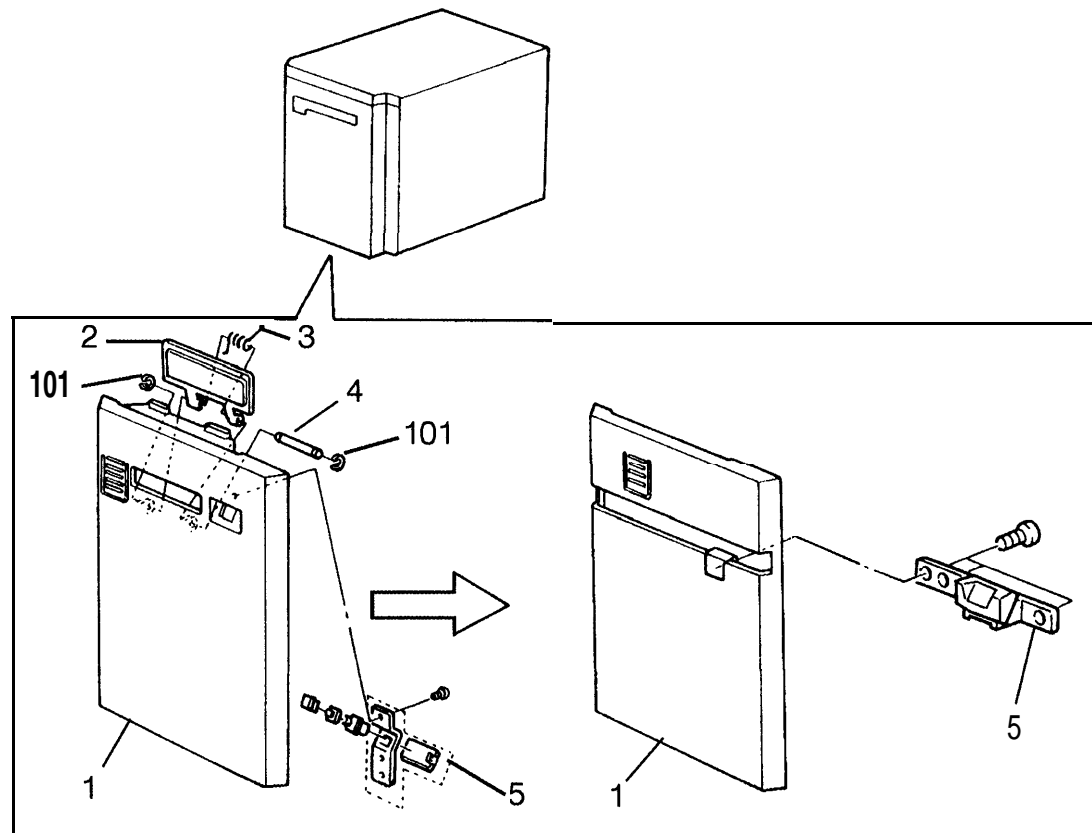
C : Replace with new parts at time of overhaul.

1) When old and new parts are not mutually interchangeable, use additional parts or an assembly part as indicated in "Parts needed for replacement by new part" to install the new part.

2) The mark to the left of the slash indicates whether the old part can be used in the new machine, and the mark to the right indicates whether the new part can be used in the old machine. x =Not interchangeable o = I nterchangeable

DETAILS OF MODIFICATION

To make the look of the LCT compatible with the F22, the design of the front cover and the tray button switch have been changed, but the old LCT can also be used on the F22.

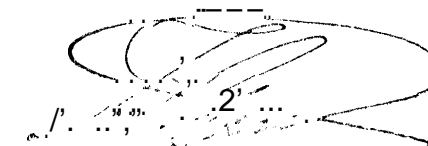


T. Ito, Manager

MODEL NAME	V/Hz	DESTINATION	CODE	SERIAL NUMBER
PB D845	11 5/60	USA	5938-11	
SAVIN LCT65	11 5/60	USA	5938-15	
NRG T-61	11 5/60	CAN	5938-16	9310400XXX
RT20	11 5/60	USA	5938-17	
NRG T-61	220, 240/50	EUROPE	5938-25	9310200942
HCS Magazine	220, 240/50	EUROPE	5938-26	
RT20	220, 240/50	EUROPE	5938-27	

Model		Large Capacity Tray for F20/F21/F22						Volt/Hz	Date of Modification	Serial Number	
Modified Article		Exterior Covers (Nashua version only)									
Reason for Modification		To fit the NRG new color									
Draw No.	Old Parts Nom		New Parts No.	Description	A.B.C.	Q'ty Used Old → New	Inter-change-ability	Part needed for replacement by new part		Parts Catalog	
					Rank			Part No.	Description	Index No.	Page
	A4637217		A4637817	Front Cover - Large Capacity Tray		1 → 1	X/X			1	9
	59382706		A4637215	Left Cover - Large Capacity Tray		1 → 1	x/x			13	11
	59382711		A4637224	Rear Cover - Large Capacity Tray		1 → 1	X/X			14	11
	59382960		A4637231	Access Cover		1 → 1	X/X			20	11
	59382951		A4637237	Magnet Sheet -1.5 x38x 100		1 → 1	x/x			5	11
	59382965		A4637238	Top Cover		1 → 1	X/X			15	11
	59382728		A4637240	Right Cover - Large Capacity Tray		1 → 1	X/X			19	11

To fit the NRG new color, the color of the exterior covers has been changed.
The shapes of the old and new each cover remains the same.



T. Ito, Manager
Copier Technical Support

MODEL NAME	V/Hz	DESTINATION	CODE	SERIAL NUMBER
PB D845	11 5/60	USA	5938-11	
SAVIN LCT65	11 5/60	USA	5938-15	
RT20	11 5/60	USA	5938-17	9310900XXX -
RicoNRGh RT25	220, 240/50	EUROPE	5938-25	
HCS	220, 240/50	EUROPE	5938-26	9310601085 -
RT20	220, 240/50	EUROPE	5938-27	

Model	Large Capacity Tray for F20 / F21 / F22	Volt/Hz	Date of Modification	Serial Number
Modified Article	Pick-up Roller			
Reason for Modification	Vender change			

As the vender has been changed, the part number of the pick-up roller is changed.
The quality and the durability of the new part is the same that of the old part.

Old P/N	New P/N	Description	Q'ty Used	Interchangeability	Index No.	Page
54297069	AF030016	Pick-up Roller	1 → 1	O/O	27	7

T. Ito, Manager
Copier Technical Support

MODEL NAME	V/Hz	DESTINATION	CODE	SERIAL NUMBER
PB D845	115/60	USA	5938-11	Service Part Only
SAVIN LCT65	115/60	USA	5938-15	330209XXXX
NRG T-61	115/60	Canada	5938-16	932080XXXX
RICOH RT20	115/60	USA	5938-17	Service Part Only
NRG T - 61	220, 240/50	EUROPE	5938-25	9320501239
HCS Magazine	220, 240/50	EUROPE	5938-26	Service Part Only
RICOH RT20	220, 240/50	EUROPE	5938-27	Service Part Only